



**P E R K I N S**  
**MANUFACTURING COMPANY**

**CREATORS OF THE**  
**TUCKAWAY™ LIFTER**

## *Instruction Manual*

updated 02/28/2013



Check out our website!  
[WWW.PERKINSMFG.COM](http://WWW.PERKINSMFG.COM)

**Model D6099oa-27k**

**An ISO 9001:2000 Company**

**Perkins Manufacturing Company**  
737 Oakridge Drive  
Romeoville, IL 60446  
Local (708) 482-9500  
Fax (708) 354-5878  
Email: [tuckaway@perkinsmfg.com](mailto:tuckaway@perkinsmfg.com)



## ***Hardware Glossary***

**(HYDRAULICS SOLD SEPARATELY)**



**FLOW DIVERTER  
VALVE  
PART # D63237S**



**P.O. CHECK  
VALVE  
PART # D63580**



**DUAL FLOW  
DIVERTER VALVE  
PART # D63411S**



**ADJUSTABLE  
FLOW CONTROL  
PART # D63575**



**4-WAY  
DIRECTIONAL  
HAND CONTROL  
PART # D63228**



**AEROQUIP  
HYDRAULIC  
HOSES**



**FLOW DIVERTER  
WITH PRESSURE  
RELIEF VALVE  
PART # D63471**



**HOSE  
CLAMP  
PART # D63014**



**SEQUENCE  
VALVE  
PART # D63612**



**ASSORTED  
FITTINGS**



## ***Cart Glossary***



**US CART**  
**ANSI TYPE "B"**



**EUROPEAN CART**  
**ANSI TYPE "C"**



**DIAMOND CART**  
**ANSI TYPE "D"**

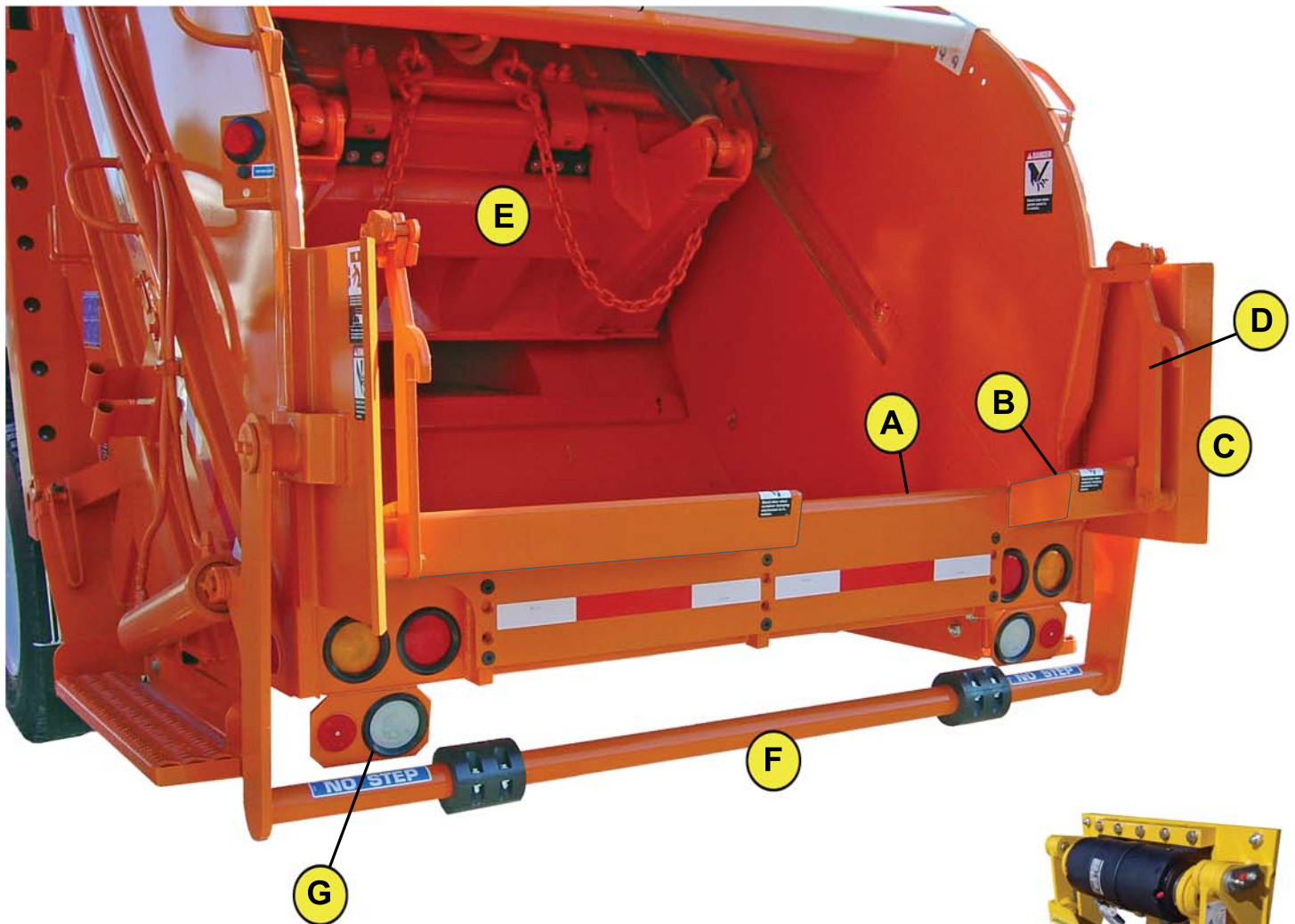


**AUTOMATED CART**  
**ANSI TYPE "G"**





## Truck Component Glossary



- A ORIGINAL SILL / MOUNTING HEIGHT
- B SILL EXTENSION / BUMPER
- C ELEPHANT EAR
- D CONTAINER LOCKS
- E PACKER BLADE
- F KICK BAR / TIPPER BAR
- G LIGHT PANEL



**INSTALLERS NOTE: IF YOUR TRUCK HAS A KICK BAR / TIPPER BAR, MAKE SURE YOUR LIFTER IS COMPATIBLE. THE LIFTER SHOULD NOT MAKE CONTACT WITH THE BAR. IT MAY BE NECESSARY TO MODIFY OR LOWER THE BAR TO CLEAR THE LIFTER. SEE INSTRUCTIONS.**





## ***Mounting Considerations***

**CENTER MOUNT REARLOAD**



**SIDELOAD**



**INSTALLERS NOTE: ON A REARLOADER, ONLY ONE D60990A MAY FIT, DUE TO THE ARMS. FOR SIDELOADERS, IT IS POSSIBLE TO HAVE TWO UNITS, ONE ON THE CURB SIDE AND ONE ON THE STREET SIDE.**

**REARLOADER: ENSURE THAT THE LIFTER IS POSITIONED SO THAT IT DUMPS AS DEEPLY AND AS HIGH INTO THE HOPPER AS POSSIBLE FOR THE BEST DUMP PERFORMANCE, WHILE STILL ENGAGING THE CARTS CORRECTLY. THE LIFTER SHOULD BE INSTALLED SO THAT IT IS NOTCHED INTO THE REAR SILL OF THE TRUCK, WHICH REDUCES SPILLAGE AND ALLOWS MORE TRASH IN THE HOPPER BEFORE PACKING IS NECESSARY. NOTCHING THE LIFTER IN ALSO HELPS PROTECT THE LIFTER FROM REARWARD COLLISION DAMAGE. WHEN THE LIFTER DUMPS, NO PART OF THE LIFTER OR CART SHOULD CONTACT THE SILL OR OTHER COMPONENTS OF THE TRUCK. IF LIGHTS ARE OBSTRUCTED BY THE LIFTER OR ITS ARMS, RELOCATE THE LIGHTS SO THEY ARE VISIBLE FOR SAFETY.**

**SIDELOADER: ENSURE THAT THE ARMS DO NOT CONTACT ANY COMPONENT OF THE TRUCK (SUCH AS GAS TANK, OIL TANK, STORAGE BOXES, ETC). MAKE SURE THE LIFTER CLEARS UNDER THE SWING OF THE ACCESS DOOR, IF PRESENT. MAKE SURE THE LIFTER AND THE CART DO NOT CONTACT ANY OTHER PART OF THE TRUCK DURING THE LIFT CYCLE, INCLUDING THE DOOR OR MOUNTING SILL. ADDITIONALLY, THE LIFTER SHOULD NOT STICK OUT PAST THE MIRRORS OR EXCEED LEGAL WIDTH RESTRICTIONS FOR ANY ROAD IT IS OPERATING UPON.**



## ***Installation Preparation & Safety***

- 1) PLEASE READ THIS MANUAL COMPLETELY AND FAMILIARIZE YOURSELF WITH ALL THE NECESSARY PROCEDURES. CONTACT PERKINS MANUFACTURING IF AT ANY TIME THERE IS A QUESTION.**
- 2) CORRECT INSTALLATION DIMENSIONS DEPEND ON AN EMPTY TRUCK, PARKED ON A SMOOTH AND LEVEL SURFACE.**
- 3) REMOVE ANY FLAMMABLE MATERIALS FROM THE WORK AREA AND HOPPER.**
- 4) DO NOT WELD ON THE TRUCK UNLESS THE GROUND IS IN PLACE AND THE BATTERY IS DISCONNECTED.**
- 5) LIFTERS AVERAGE ABOUT 200 LBS. ALWAYS USE A HOIST TO LIFT AND SECURE THE LIFTERS INTO PLACE.**
- 6) DURING INSTALLATION, SECURE THE LIFTER WITH A CHAIN TO PREVENT ACCIDENTS.**
- 7) TURN THE TRUCK OFF AND DEPRESSURIZE THE HYDRAULIC LINES BEFORE LOOSENING ANY FITTINGS OR HOSES.**
- 8) ALWAYS USE APPROPRIATE PERSONAL SAFETY GEAR.**



**INSTALLERS NOTE: IT IS NOT RECOMMENDED TO INSTALL A LIFTER ONTO A TAILGATE THAT IS NOT ALREADY MOUNTED TO A CHASSIS. THIS CAN LEAD TO LIFTERS MOUNTED TOO LOW OR TOO HIGH, DUE TO CHASSIS HEIGHT VARIATIONS.**



**INSTALLERS NOTE: THE REAR MOUNTING PLATE IS INCLUDED WITH EVERY LIFTER AND IS ATTACHED TO THE LIFTER FOR SHIPPING PURPOSES. REMOVE THE REAR PLATE TO INSTALL IT TO THE TRUCK.**



**INSTALLERS NOTE: YOUR LIFTER WILL COME WITH AN ADJUSTABLE FLOW CONTROL VALVE ATTACHED UNDER THE LEFTHAND SIDE OF THE ACTUATOR. ALL OTHER HYDRAULICS ARE SOLD SEPARATELY.**

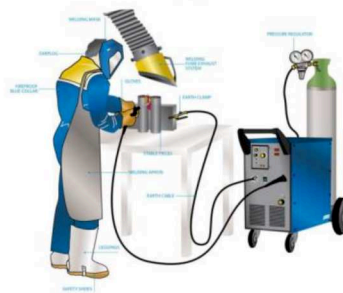
Please be aware of the risks of working with welding equipment and consumables. Always use safety protection equipment. The sparks may ignite fire, always clean the area from flammable material or flammable chemicals, do not weld close to gas lines or on top of electrical cords or installations. Disconnect battery cables from the battery and make sure the vehicle is perfectly grounded prior to attempt to do any weld. Always weld in a ventilated area.



**WHEN WELDING, WEAR APPROPRIATE EYE AND SKIN PROTECTION. WELDING LIGHT CAN BLIND. WELDING LIGHT CAN SUNBURN THE SKIN. LONG TERM EXPOSURE TO WELDING LIGHT CAN CAUSE CANCERS. ALWAYS WEAR PPE WHEN WELDING. PROPER PPE SHOULD ALSO BE WORN BY ANYONE IN THE THE WORK ZONE WHO MIGHT ALSO BE EXPOSED.**



Correct and safe electric welding station



**HYDRAULIC SYSTEMS CAN LEAK OUT HIGH PRESSURE WHICH CAN CAUSE SERIOUS INJURY, GANGRENE OR DEATH. DO NOT CHECK FOR LEAKS WITH YOUR BARE HANDS AND AVOID CONTACT WITH LEAKING OIL STREAMS.**

**HYDRAULIC OIL CAN ENTER THE BLOODSTREAM. SEEK MEDICAL ATTENTION IMMEDIATELY IF YOUR SKIN IS PUNCTURED BY HYDRAULIC OIL.**

**HYDRAULIC SYSTEMS CAN BECOME HOT (GENERALLY UP TO 170-180 DEG. F.) TO AVOID BURNS, DO NOT TOUCH VALVES, ACTUATORS, CYLINDERS, AND OTHER HOT COMPONENTS, EVEN AFTER THE SYSTEM IS SHUT OFF IT WILL REMAIN HOT AND TAKE TIME TO COOL DOWN.**

**ALWAYS TURN OFF A SYSTEM BEFORE SERVICING IT. DEPRESSURIZE THE CIRCUIT BY ACTIVATING THE CONTROLS WITH THE SYSTEM OFF TO RELIEVE ANY BUILT UP PRESSURE.**

**NEVER WORK UNDER A RAISED LOAD. RAISED EQUIPMENT CAN SUDDENLY FALL WHEN A VALVE OR LINE IS OPENED (LIKE A MOUSETRAP). IF THE EQUIPMENT MUST BE SERVICED IN THE RAISED POSITION, SECURE THE EQUIPMENT WITH CHAIN OR STRAP TO HOLD IT UP SAFETY.**



Perkins Manufacturing Company  
Creators of the TuckAway® Cart Lifter  
[www.perkinsmfg.com](http://www.perkinsmfg.com)

800-882-5292 Revised:8/10/2023

Page 11

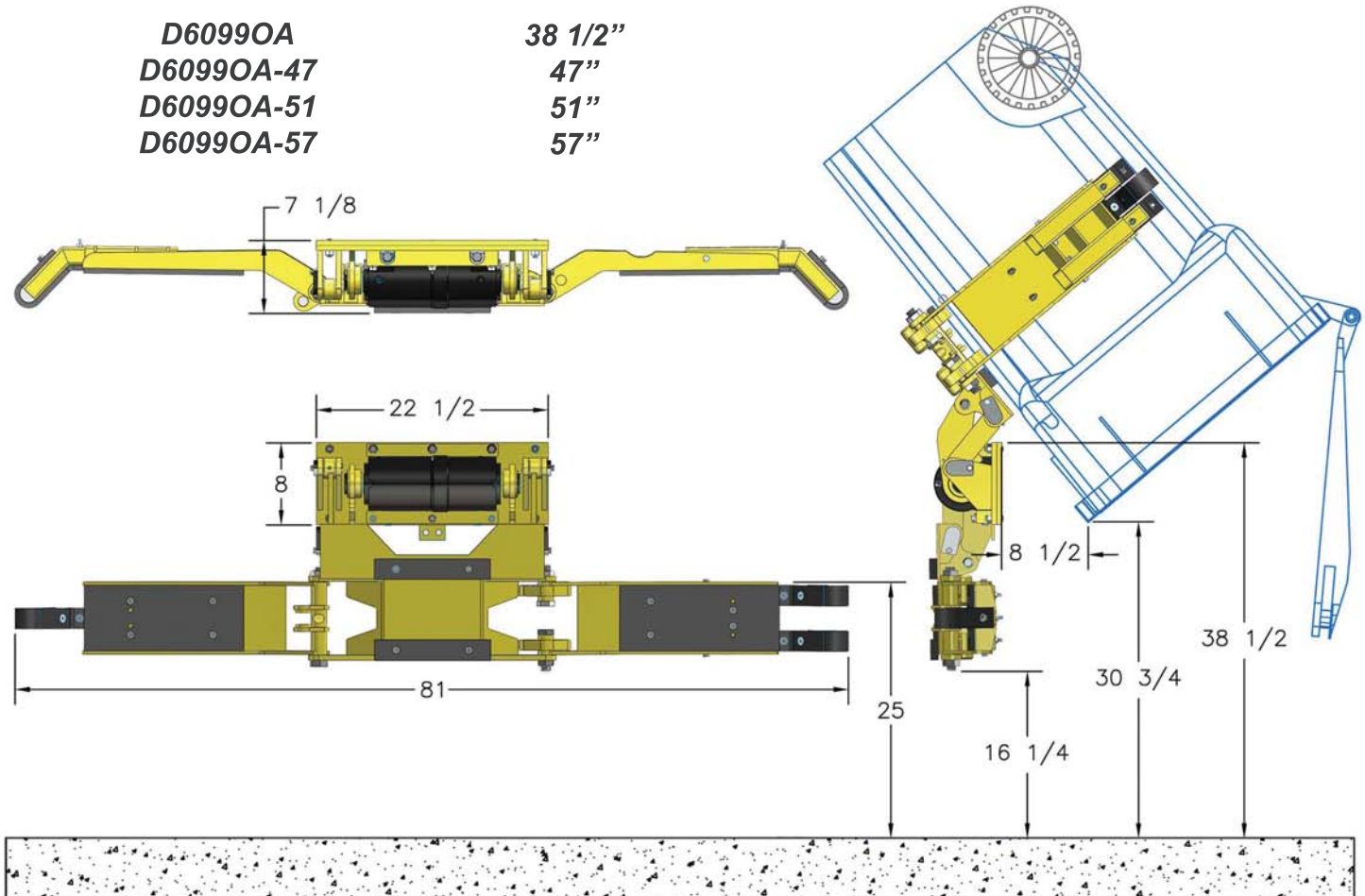




## Dimensions

### MOUNTING HEIGHT OF PLATE TO GROUND

D60990A	38 1/2"
D60990A-47	47"
D60990A-51	51"
D60990A-57	57"



**THE LIFTER SHOULD BE MOUNTED SO THE TOP OF THE GRIPPER ARMS ARE 25" TO THE GROUND. THE D60990A IS AVAILABLE IN MANY DIFFERENT ARM LENGTHS, FOR VARIOUS SIZED SIDeloadERS, SO THE MOUNTING HEIGHT TO THE TOP OF THE MOUNTING PLATE WILL VARY DEPENDING ON THE ARM LENGTH OF THE LIFTER.**



**INSTALLERS NOTE: DUE TO THE VARIETY OF TRUCK TYPES AND CUSTOM FABRICATION REQUIRED, MOST INSTALLATIONS REQUIRE SUPPORT PIECES NOT INCLUDED. BUMPER EXTENSION KITS ARE AVAILABLE AND ARE SOLD SEPARATELY.**



**INSTALLERS NOTE: TRUCK MANUFACTURERS START WITH AN ORIGINAL STRUCTURAL MEMBER ACROSS THE SILL OF THE TAILGATE. WHEN THEY ADD CONTAINER LOCKS, THEY ADD A SILL EXTENSION. WHEN RECESSING A LIFTER INTO THE SILL, IT IS OKAY TO CUT INTO THE EXTENSION, BUT NEVER CUT THE ORIGINAL STRUCTURAL MEMBER OR THE TAILGATE WILL LOSE SIGNIFICANT STRENGTH AND COULD EVEN BOW.**



## *Residential-Only Installation*

### **TYPICAL RESIDENTIAL-ONLY CONFIGURATION**

**A REAR MOUNTING  
PLATE**

**B ADD-ON STRUCTURAL  
TUBE TO RAISE SILL**

**C MOUNTING HEIGHT:  
FROM TOP OF PLATE  
TO GROUND, AS  
FOLLOWS:**

**39 1/2" FOR D0990A**

**47 1/2" FOR D60990A-47**

**51 1/2" FOR D80990A-51**

**57" FOR D60990A-57**

**(DIMENSIONS FOR 47" AND  
ABOVE WOULD BE FOR  
SIDELOADERS)**



### **STEP 2**

**CENTER AND LEVEL THE REAR MOUNTING PLATE AND TACK  
WELD IN PLACE AT THE SUGGESTED MOUNTING HEIGHT FOR  
YOUR LIFTER.**

### **STEP 3**

**IN SOME CASES, THE REQUIRED HEIGHT WILL BE HIGHER  
THAN THE EXISTING SILL. SIMPLY ADD A STRUCTURAL TUBE  
ACROSS THE SILL TO RAISE THE SILL  
HEIGHT TO MEET WITH THE TOP OF  
THE MOUNTING PLATE.**



## Commercial Installation

### STEP 1

**LOCATE YOUR MOUNTING PLATE(S) AND MARK A CUT-OUT LINE 4" WIDER THAN THE WIDTH OF YOUR MOUNTING PLATE. THIS SHOULD ALLOW FOR A 2" GAP ON EACH OF THE LIFTER. CUT INTO THE OEM SILL EXTENSION, BEING CAREFUL TO NOT CUT THE STRUTURAL SILL UNDERNEATH.**

**EXTENDED SILL AND CONTAINER LOCKS ALLOWS BOTH RESIDENTIAL AND COMMERCIAL PICKUP**



### STEP 2

**USE PAGE 7 TO DETERMINE YOUR MOUNTING PLATE HEIGHT REQUIREMENTS, LEVEL THE PLATE AND TACK IN PLACE INSIDE THE CUT-OUT. TEMPORARILY MOUNT THE LIFTER TO THE PLATE. IF THE MOUNTING PLATE IS HIGHER THAN YOUR SILL, BUILD THE SILL UP WITH A PIECE OF STRUCTURAL TUBE TO MATCH UP TO THE LIFTER.**



### STEP 3

**POSITION THE BUMPER KIT (SOLD SEPARATELY) SO THAT IT PROTECTS THE LEADING EDGES OF THE LIFTER BY AT LEAST AN 1". THE LIFTER SHOULD NOT MAKE CONTACT WITH THE COMMERCIAL CONTAINER.**

### STEP 4

**TRIM THE BUMPER KIT TO FIT AND TACK WELD IN PLACE. ADD BUMPER END-CAPS TO SEAL OFF ENDS. ADD REINFORCING SUPPORT PIECES AS NEEDED TO PREVENT FLEXING AND PROPERLY SUPPORT THE LIFTER'S MOUNTING PLATE.**







## Commercial Installation

### STEP 5

**MEASURE THE DISTANCE YOUR NEW BUMPER EXTENDS PAST THE ORIGINAL. TORCH OFF THE CONTAINER LOCKS AND EXTEND THEM THE SAME DISTANCE.**

**NOTE: NOTICE HOW IN THE FINISHED PICTURE THE LOCK HAS BEEN EXTENDED ABOUT 3" FOR THIS INSTALLATION.**

### STEP 6

**PRIOR TO WELDING FULLY, TAKE A COMMERCIAL CAN AND MAKE SURE IT CAN STILL LOCK INTO THE CONTAINER LOCKS AFTER THE MODIFICATIONS.**

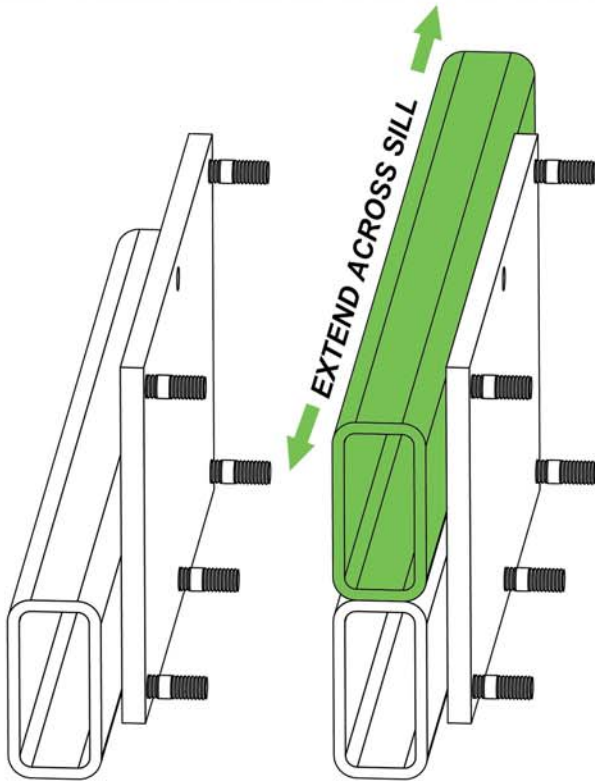


### STEP 7

**IF YOUR TRUCK COMES EQUIPPED WITH A KICK BAR / TIPPER BAR IT MAY BE NECESSARY TO LOWER THE BAR. MEASURE THE DISTANCE YOU WILL NEED TO CLEAR THE BAR BY AT LEAST 1/2" WHEN THE LIFTER IS ALL THE WAY DOWN. TORCH OFF THE KICK BAR AND EXTEND IT THE AMOUNT REQUIRED, ADDING REINFORCEMENTS AS NEEDED.**



## ***Welding the Rear Mounting Plate***



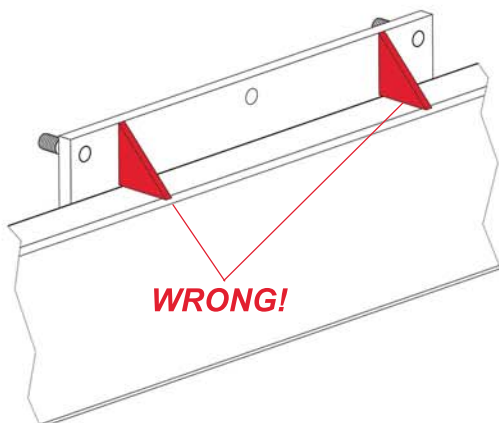
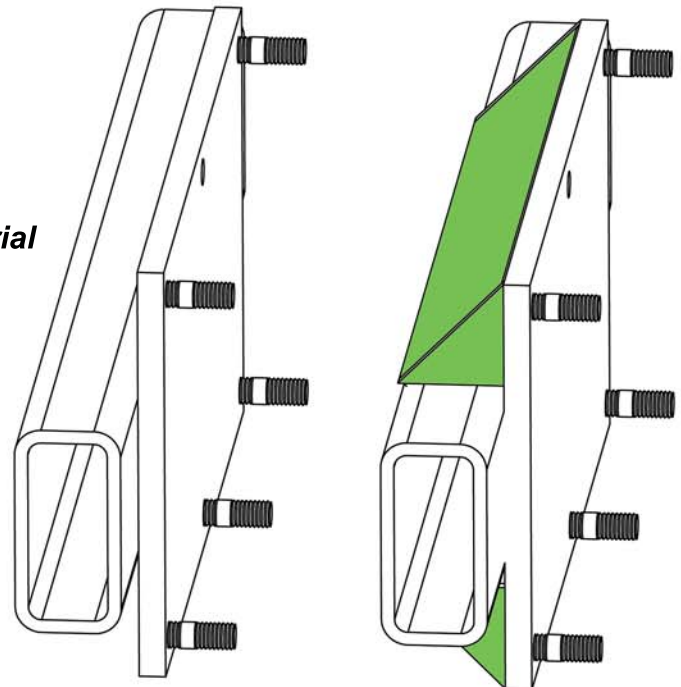
***The Rear Mounting Plate of all lifters must be completely supported around all edges of the plate.***

***Unsupported plates will lead to premature lifter failure.***

***In the example at left, the mounting plate is well above the original height of the sill. A steel tube of appropriate size is cut and placed on top of the sill, extending it up and meeting with the top edge of the mounting plate. This additional piece would extend across the entire length of the hopper sill. Weld fully, leaving no portion of the mounting plate hanging above or below the original sill without support***

***In the example at right, the mounting plate is shown to be slightly above (or slightly below) the sill edge. In this case, add a strip of material and endcaps to the exposed mounting plate rear and weld fully.***

***Installations will vary from truck to truck. Custom cut pieces will likely be required to properly support the mounting plate.***



***The drawing at left is an example of inadequate support. The gussets will not help add rigidity to the mounting plate and the mounting plate will deform over time, leading to premature lifter failure. Never leave any portion of the mounting plate hanging without proper backing material.***



## Hydraulic Installation

### STEP 1

**FIND A SUITABLE LOCATION FOR THE HAND VALVE BRACKET. THE VALVE SHOULD BE LOCATED TO PREVENT ACCIDENTAL ACTIVATION, WITHIN ARMS REACH OF THE LIFTER AND AT A COMFORTABLE HEIGHT. MAKE SURE THAT IF YOU ARE USING THE HOSES PROVIDED IN THE TAP-IN KIT THAT THEY WILL REACH BOTH LIFTER AND DIVERTER VALVE FROM THIS LOCATION. TACK WELD HAND VALVE BRACKET IN PLACE.**



**HAND VALVE CONTROL**



### STEP 2

**RUN THE HYDRAULIC HOSES ALONG THE TAILGATE AND HOPPER UNDERBELLY, MARK SUITABLE LOCATIONS FOR THE HOSE CLAMPS. TACK WELD THESE IN PLACE.**



**INSTALLER'S NOTE: RUN THE HOSES SO THEY CAN BE PROTECTED AS MUCH AS POSSIBLE FROM CASUAL ABRASION. HOSES SHOULD HAVE MINIMAL MOVEMENT AND NOT REST ON ANY SHARP EDGES.**

### STEP 3

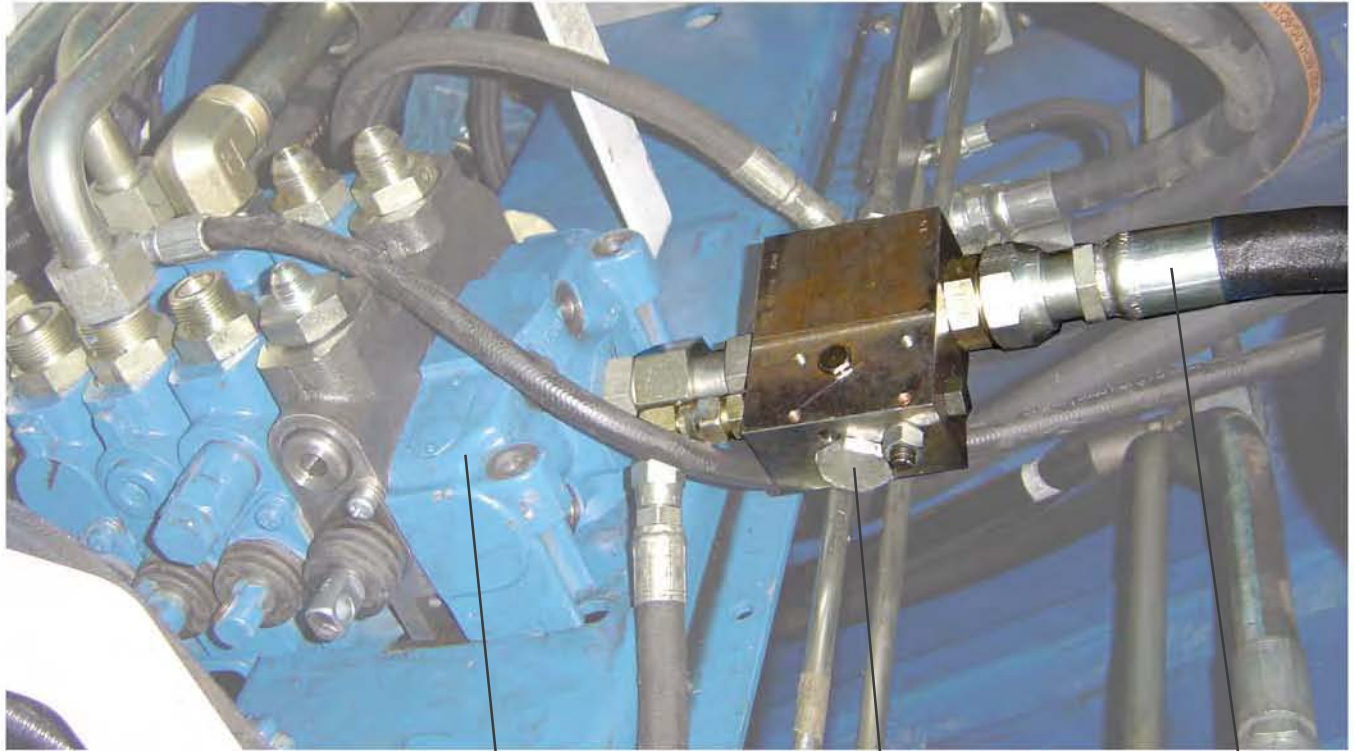
**ATTACH TWO HOSES FROM BOTTOM OF LIFTER TO HAND VALVE. PORT "A" OF HAND VALVE GOES TO LEFT-HAND ACTUATOR PORT. PORT "B" GOES TO RIGHT-HAND ACTUATOR PORT.**







## *Hydraulic Installation*



**PACKER BLADE  
CONTROL VALVE**

**DIVERTER VALVE**

**PRESSURE LINE**

### **STEP 4**

**LOCATE THE PACKER CONTROL VALVE ON THE TOP OF THE TAILGATE. (SEE PICTURE) DISCONNECT THE PRESSURE LINE THAT FEEDS THE PACKER VALVE AND ATTACH IT TO THE PERKINS DIVERTER VALVE'S "IN" PORT. ATTACH THE "OUT" PORT BACK TO THE PACKER BLADE CONTROL VALVE.**

### **STEP 5**

**ATTACH THE PRESSURE LINE (S) THAT WILL FEED THE LIFTER. IF YOU ARE INSTALLING TWO LIFTERS, THE DIVERTER VALVE WILL HAVE A 50/50 SPLITTER MOUNTED ON TOP OF IT. FOR ONE LIFTER, USE PORT "P" OF DIVERTER VALVE TO HAND VALVE "IN" PORT. FOR TWO LIFTERS, PORT "P" IS PLUGGED. INSTEAD USE PORTS "1" & "2" ON THE ATTACHED 50/50 SPLITTER.**

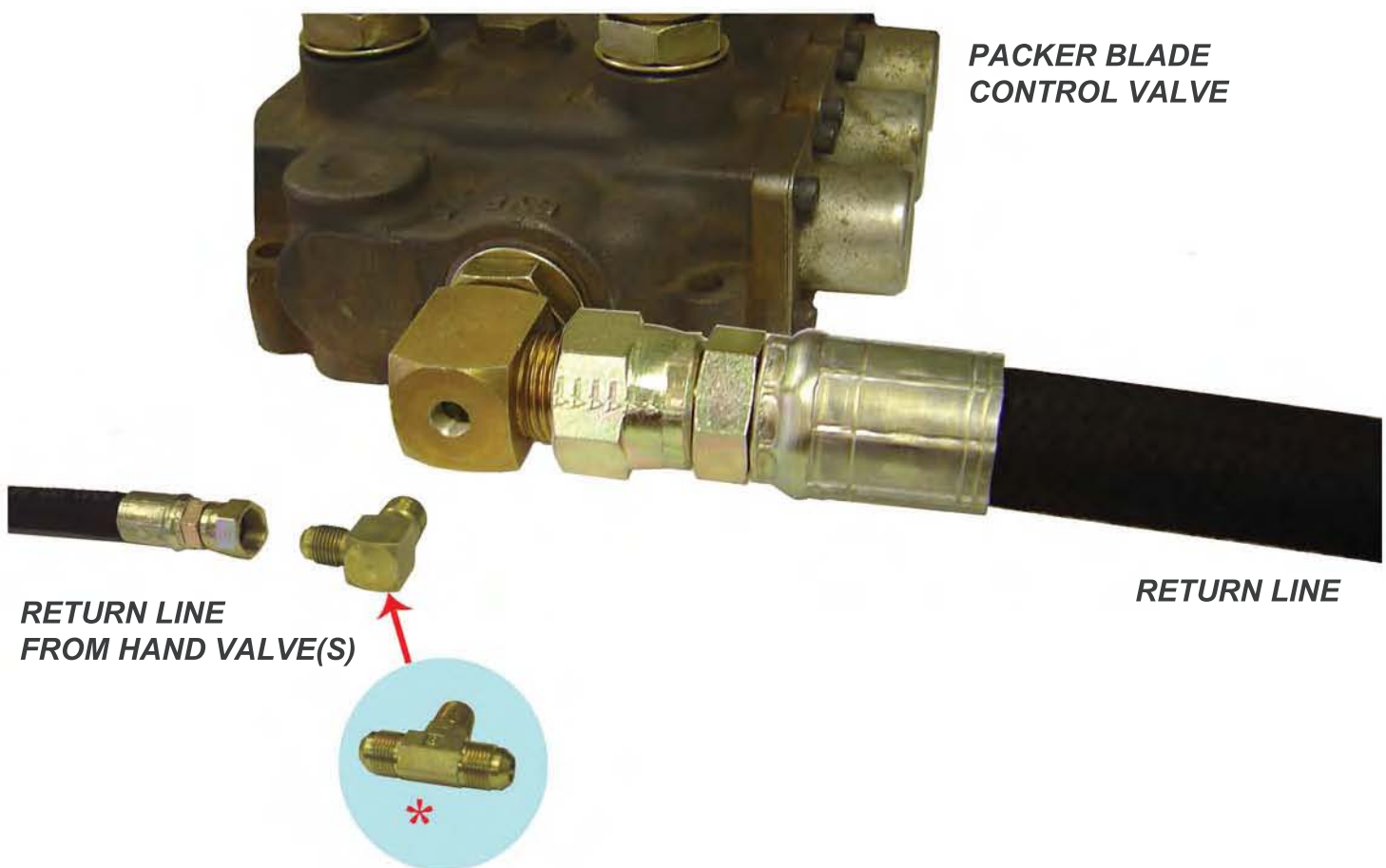




## ***Hydraulic Installation***

### **STEP 6 (OPTION A) \*\* PREFERRED METHOD OF OIL RETURN \*\***

**RUN THE RETURN LINE FROM THE HAND VALVE (S) (OUT" PORT (S) UP TO THE PACKER BLADE CONTROL VALVE. LOCATE THE PACKER BLADE CONTROL VALVE'S RETURN TO TANK LINE. SELECT A LARGE FITTING ON THE RETURN LINE AND DRILL AND TAP INTO IT'S BODY FOR 3/8 NPT INSTALL A ELBOW OR TEE TO ATTACH THE RETURN LINES.**

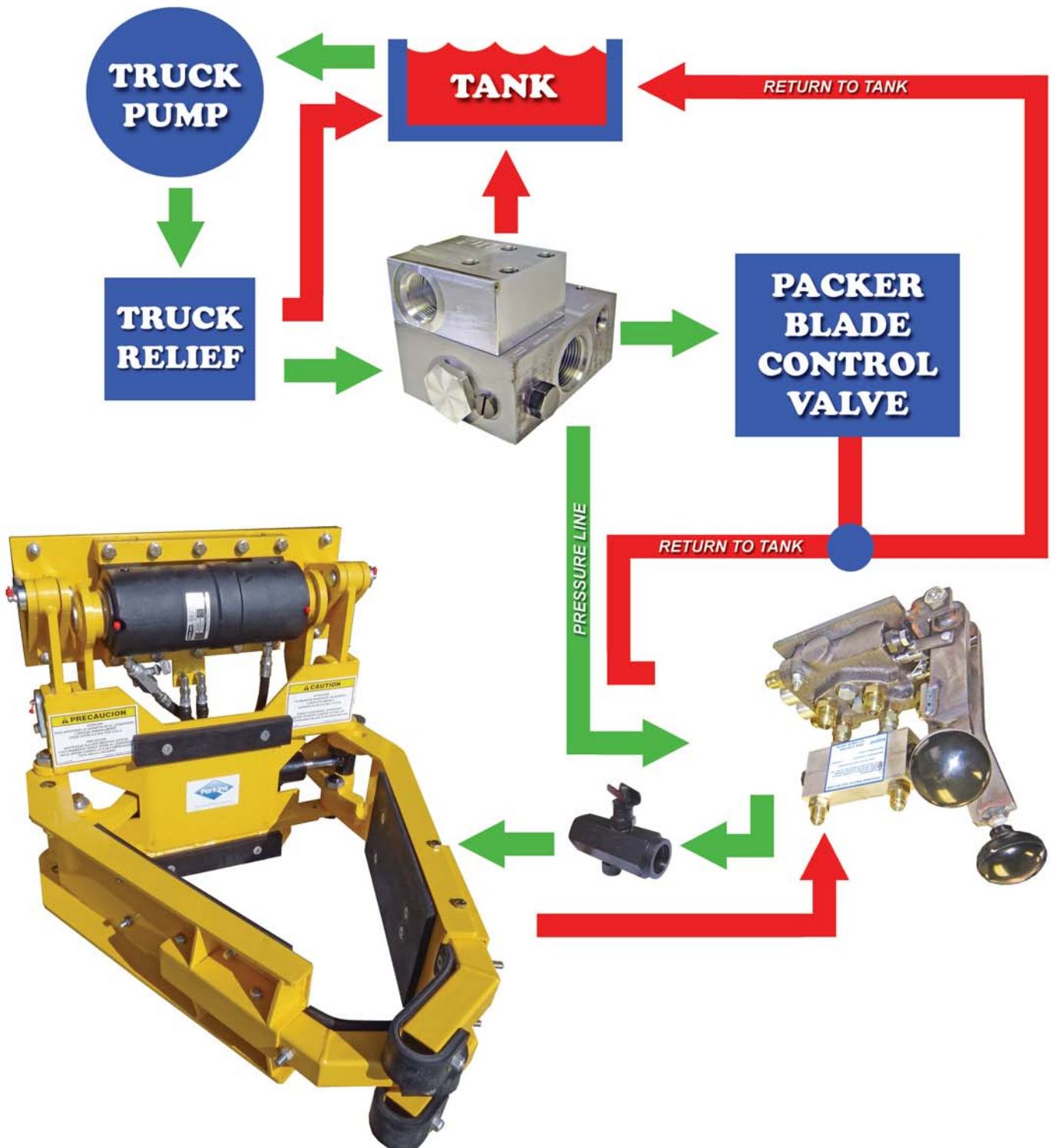


### **STEP 6 (OPTION B) \*\*ALTERNATE METHOD \*\***

**RUN THE RETURN LINE FROM THE HAND VALVE (S) (OUT" PORTS UP TO THE DIVERTER VALVE AND CONNECT TO THE "R" RETURN PORT. THIS OPTION ALLOWS THE OIL TO BE RETURNED TO THE PACKER BLADE, KEEPING THE BLADE SPEED THE SAME AS IT WOULD BE WITHOUT THE DIVERTER VALVE, BUT AT THE EXPENSE OF A SLIGHT INCREASE IN OPERATING TEMPERATURE/BACK PRESSURE.**



## Hydraulic Schematic - Single







## Hydraulic Parts Kit (Sold Separate)



- 1 D63236
- 2 D63237S
- 3 D63606
- 3a D63292
- 4 D63044
- 4a D63291
- 5 D63429
- 6 D63591
- 7 D63580
- 8 D63639
- 9 D63430
- 10 D63490
- 11 D63051
- 12 D63489
- 13 D63550
- 14 D63416
- 15 D63635
- 16 D63074
- 17 D63431
- 18 D63014
- 19 D63535
- 20 D63760
- 21 D63534
- 22 D62460
- 23 D62063

	LEACH			HEIL/NUWAY			LOADMASTER EZ-PACK DEMPSTER PAK-MOR MCNEILUS		
	SINGLE - OFFSET KIT # D60311 / (-2R3)	DOUBLE INSTALL KIT # D60321 / (-2R3)	SINGLE - CENTER KIT # D60393 / (-2R3)	SINGLE - OFFSET KIT # D60312	DOUBLE INSTALL KIT # D60322	SINGLE - CENTER KIT # D60394	SINGLE - OFFSET KIT # D60313	DOUBLE INSTALL KIT # D60323	SINGLE - CENTER KIT # D60395
1		1			1			1	
2	1	1	1	1	1	1	1	1	1
3	1	1	1				1	1	1
3a	1	1	1						
4	1	1	1				1	1	1
4a	1	1	1						
5				2	2	2			
6	1	2	1	1	2	1	1	2	1
7	1	2	1	1	2	1	1	2	1
8	2	4	2	2	4	2	2	4	2
9	2	4	2	2	4	2	2	4	2
10				1	1	1			
11							1	1	1
12				1	1	1			
13	1		1	1		1	1		1
14		1			1			1	
15	1	1	1	1	1	1	1	1	1
16		1			1			1	
17		1			1			1	
18	5	10	5	5	10	5	5	10	5
19	2	4	2	2	4	2	2	4	2
20			2			2			2
21	2	4		2	4		2	4	
22	1	2	1	1	2	1	1	2	1
23	5	10	5	5	10	5	5	10	5



## ***Final Installation***

**TEST THE LIFTER WITH THE FULL VARIETY OF CARTS YOU EXPECT TO USE WITH THIS TRUCK. MAKE SURE THEY ALL WORK AS INTENDED.**

**TEST THE ABILITY TO LOCK-UP A COMMERCIAL CONTAINER.**

**WHEN SATISFIED, WELD FULLY ALL NECESSARY LOCATIONS AROUND CONTAINER LOCKS, BUMPER EXTENSIONS, LIFTER MOUNTING PLATE, HOSE CLAMPS, BRACKETS AND SUPPORT PIECES.**

**WHEN PAINTING, MASK CAUTION LABELS SO THEY WILL BE VISIBLE AFTERWARDS. ADDITIONAL CAUTION LABELS ARE AVAILABLE BY CALLING CUSTOMER SERVICE.**

**REINSTALL BATTERY TERMINAL CONNECTION AFTER ALL NECESSARY WELDING IS COMPLETE.**

**TIGHTEN ALL HYDRAULICS AND CHECK FOR LEAKS.**



**INSTALLER'S NOTE: NEVER CHECK FOR HYDRAULIC LEAKS WITH YOUR BARE HANDS. A PIN-HOLE LEAK CAN BE PRESSURIZED ENOUGH TO PIERCE THE SKIN AND CAUSE INFECTION / INJURY.**

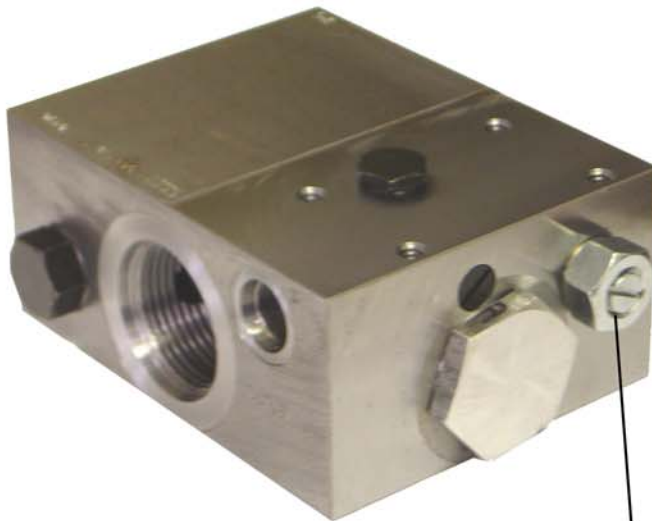
**OPERATE THE LIFTER. IT'S MOVEMENT WILL BE ERATIC THE FIRST FEW CYCLES BECAUSE OF AIR IN THE SYSTEM. CONTINUOUS BACK AND FORTH CYCLING SHOULD CLEAR THE LAST OF THE BUBBLES AFTER A DOZEN CYCLES.**

**AFTER THE AIR IS PURGED, IT IS TIME TO ADJUST THE HYDRAULIC VALVES.**



## Adjusting the Hydraulics

**\* CAUTION \* ADJUST THIS VALVE WITH  
THE HYDRAULIC PUMP OFF OR VALVE  
DAMAGE COULD OCCUR**



ADJUSTMENT SCREW

### **DIVERTER VALVE - FLOW CONTROL #D63237S**

**OPEN THE ADJUSTABLE FLOW CONTROL,  
COMPLETELY. LOSEN THE LOCKING NUT ON  
THE DIVERTER. USING A SCREWDRIVER,  
TURN THE ADJUSTMENT SCREW CLOCKWISE  
UNTIL FLOW TO THE LIFTER STOPS. THEN  
SLOWLY TURN COUNTER-CLOCKWISE 1/2  
TURN AT A TIME UNTIL FLOW IS APPROX.  
3 GPM PER LIFTER, OR THE LIFTERS HAVE  
A COMPLETE CYCLE TIME OF 6-10 SECONDS.  
RE-TIGHTEN THE LOCKING NUT.**

**SEAL KIT #D63477  
ADJUSTABLE SCREW #D63565**

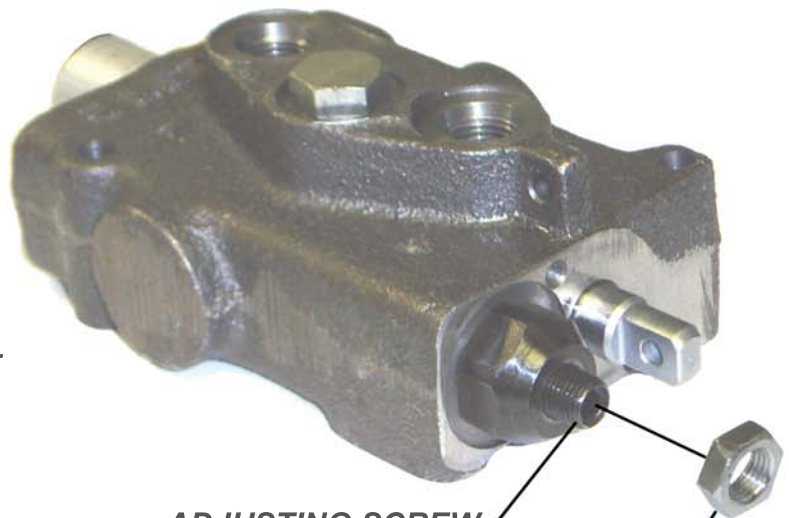


**FLOW=LIFTER SPEED. ADJUST WITH DIVERTER VALVE  
PRESSURE = LIFTING POWER. ADJUST WITH HAND VALVE**

### **HAND VALVE'S BUILT-IN RELIEF #D63228**

**LOOSEN THE LOCKING NUT. TURN  
THE ADJUSTING SCREW CLOCKWISE  
TO INCREASE THE PRESSURE, LIMITED  
BY THE TRUCK'S MAIN RELIEF SETTING.  
THE RELIEF SHOULD BE SET TO ALLOW  
THE LIFTER TO DUMP A 350LB LOAD.  
THE ACTUAL PSI REQUIRED WILL VARY  
FROM MODEL TO MODEL. THE HAND  
VALVE'S RELIEF MUST BE SET AT LEAST  
100 PSI LESS THAN THE TRUCK'S MAIN  
RELIEF OR THEY MAY "CHATTER".  
RE-TIGHTEN THE LOCKING NUT.**

**SEAL KIT #D63127  
SPRING KIT #D63192  
CARTRIDGE KIT#D63672**



ADJUSTING SCREW

LOCKING NUT





## ***Operating Instructions***

**START THE ENGINE AND ACTIVATE THE PUMP.**

**ROLL A CART TO THE LIFTER, PLACING IT SO THE CART LIFTER WILL BE ABLE TO ENGAGE THE CART WITH THE GRIPPER ARMS. THE FACE OF THE CART (WHERE THE BARS ARE) SHOULD FACE THE LIFTER.**

**PULL HANDLE OF HAND VALVE TO GRIP THE CART.**

**PULL THE SECOND HANDLE TO DUMP THE CART.**

**ONCE WASTE IS DUMPED, REVERSE THE SECOND HANDLE TO RETURN THE CART TO THE GROUND.**

**PULL FIRST HANDLE OTHER WAY TO RELEASE THE GRIPPER ARMS.**

**REPLACE THE EMPTY CART WITH A LOADED CART AND REPEAT.**



**OPERATOR'S NOTE: GIVING THE CART A SHAKE BACK AND FORTH IS A COMMON OPERATOR MISTAKE. EXCESSIVE, RAPID SHAKING CAN CAUSE WEAR AND TEAR WHICH CAN LEAD TO PREMATURE FAILURE OF THE LIFTER AND/OR THE CART. USE CAUTION AND COMMON SENSE AND DO NOT ABUSE THE EQUIPMENT. EXCESSIVE SHAKING IS NOT COVERED BY WARRANTY.**



**OPERATOR'S NOTE: THE MOST COMMON WAY TO DAMAGE YOUR CART INVESTMENT IS TO RUN THE LIFTERS TOO FAST. MAINTAIN THE LIFTER CYCLE OF 6-10 SECONDS. USE LOCK-OUT PROCEDURES TO PREVENT IN-FIELD ADJUSTMENTS.**



**OPERATOR'S NOTE: OVER-LOADED CARTS, BROKEN CARTS, CARTS NOT WITHIN ANSI STANDARD, AND BULK ITEMS SHOULD NOT BE LIFTED WITH THE CART LIFTER.**



## ***Safety Procedures***



***ALWAYS KEEP YOUR HANDS AND BODY AWAY FROM THE LIFTER WHILE IT IS IN OPERATION.***



***NEVER REACH INTO THE HOPPER WHILE LIFTER IS IN OPERATION.***



***MAKE SURE ALL PERSONS ARE CLEAR OF LIFTER BEFORE AND DURING OPERATION.***



***DO NOT LIFT BROKEN CARTS OR BULK ITEMS WITH THE LIFTER.***



***DO NOT OPERATE THE LIFTER FASTER THAN 6 SECONDS PER CYCLE.***



***DO NOT LIFT OVER-LOADED CARTS. THEY CAN BREAK AND FALL OR BE THROWN/DROPPED AFTER BREAKING.***



***DO NOT LIFT CARTS THAT ARE NOT MEANT FOR THIS LIFTER.***



***DO NOT PERFORM MAINTANANCE ON THE LIFTER UNLESS IT IS PROPERLY SECURED WITH A CHAIN***



***INSPECT THE LIFTER DAILY BEFORE USE, FOR ANYTHING OBVIOUSLY IN NEED OF REPAIR OR UNSAFE.***



## ***Maintenance***

### **WASHING**

**A SIMPLE AND QUICK POWER-WASH WILL REMOVE FLTH & GRIME FROM THE LIFTER'S CRITICAL COMPONENTS, MAKING THEM LAST LONGER AND MAKING INSPECTION FOR DAMAGES EASIER.**

### **LUBRICATION**

**PROPER GREASING OF THE LIFTER IS IMPORTANT. CHECK THE LIFTERS WEEKLY AND GREASE AS NECESSARY ANY PIVOT OR SLIDE POINTS THAT DO NOT MOVE SMOOTHLY. SOME NEWER MACHINES HAVE FIBERGLIDE BEARINGS THAT DO NOT REQUIRE GREASE. YOUR LOCAL WEATHER CONDITIONS WILL VARY THE FREQUENCY OF YOUR NECESSARY GREASING.**

### **BEARINGS**

**THE LIFTER SHOULD MOVE FREELY, BUT SNUGLY. ANY PLAY OR LOOSENESS INDICATES BEARING WEAR. BEARINGS THAT ARE WORN OR SCARRED SHOULD BE REPLACED IMMEDIATELY.**

### **BREAKAWAY FEATURE**

**IF YOU LIFTER HAS A BREAKAWAY FEATURE, THERE MAY BE A SHEAR BOLT ON THE DRIVER ARM. MAKE SURE THE BOLT IS IN PLACE BEFORE USE DAILY.**

### **LIFTER COMPONENTS**

**USE THE WEEKLY GREASING AS A TIME TO PERFORM A SPOT CHECK OF THE PARTS ON THE LIFTER, ENSURING NOTHING IS BENT OR SHOWING FATIGUE. A DAMAGED LIFTER MAY STILL DUMP CARTS, BUT IT MAY DAMAGE THEM TOO. PROTECT YOUR CARTS BY KEEPING YOUR LIFTERS IN GOOD CONDITION.**

### **HYDRAULIC COMPONENTS**

**INSPECT ALL HOSES AND REPLACE ANY THAT ARE WORN OR FRAYED. LOOK FOR SIGNS OF LEAKS AND TIGHTEN THE APPROPRIATE FITTINGS. LIFTERS THAT DRIFT WHEN NOT IN USE MAY NEED A NEW SEAL KIT FOR THE ACTUATOR, OR HAND VALVE. DON'T FORGET TO BLEED THE AIR AFTER ANY HYDRAULIC WORK.**



## Servicing the PerkinsHKS Rotary Actuator

PerkinsHKS27k Actuator: D73060HKS

Common Parts: Seal Kit: D73060HKS-1 Bearing Ring (x1) #D73060hks-3

**DO NOT ORDER SPARE PARTS FOR ANY ACTUATOR WITHOUT CALLING PERKINS WITH A POSITIVE ID VIA SERIAL #, LCOATED ON THE ACTUATOR BODY.**

Actuator Shaft : **D73060hks-2**

The manual for the actuator is provided separately and free of charge. It contains detailed instructions for rebuilding, based on a complete tear-down. Also, within the manual is a complete parts listing. To receive a copy of the actuator manual, simply call Perkins at 800-882-5292.

### Flushing the Actuator

Because the oil displacement of the actuator is nearly equal to the displacement of the hoses, the oil inside the actuator does not fully displace to the system and get filtered with each use. Only a percentage of the oil displaces. Because of this, it is possible to have build-up of particles over time which can lead to premature wear, especially in dirty oil conditions. Perkins recommends flushing the oil in the actuator to the system to allow for complete filtration once every 6 months. This will help ensure the actuator has a very long lifespan.

To flush the oil, turn off / depressurize the system and connect a hose from one bleed port to the other. Tighten the fittings restart the pump. Run the hand valve back and forth several times, holding the handle down for about a minute each time. This ensures any particles have completely exited the actuator.

**BYPASS HOSE  
USING THE #4  
BLEED PORTS**



Perkins Manufacturing Company  
Creators of the TuckAway® Cart Lifter  
[www.perkinsmfg.com](http://www.perkinsmfg.com)

800-882-5292

Revised:8/10/23

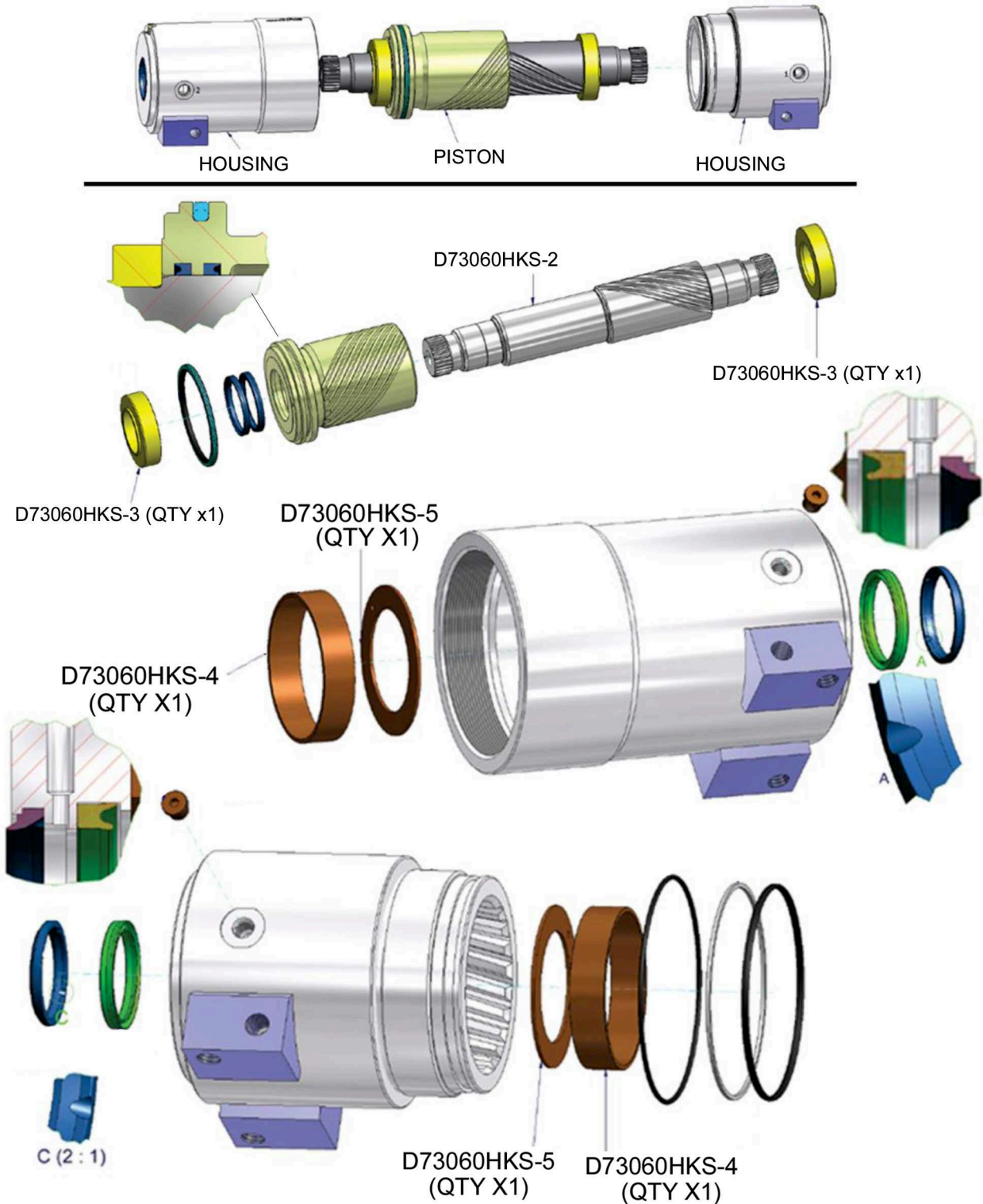
Page **22**

## 27k HKS (Current) Actuator Parts Guide

The housing and piston pieces are not replaceable due to the need to mate them at the factory.

Seals are only sold in kit form. One kit contains all the seals for one actuator.

Bearings and Bushings and Washers are sold individually.

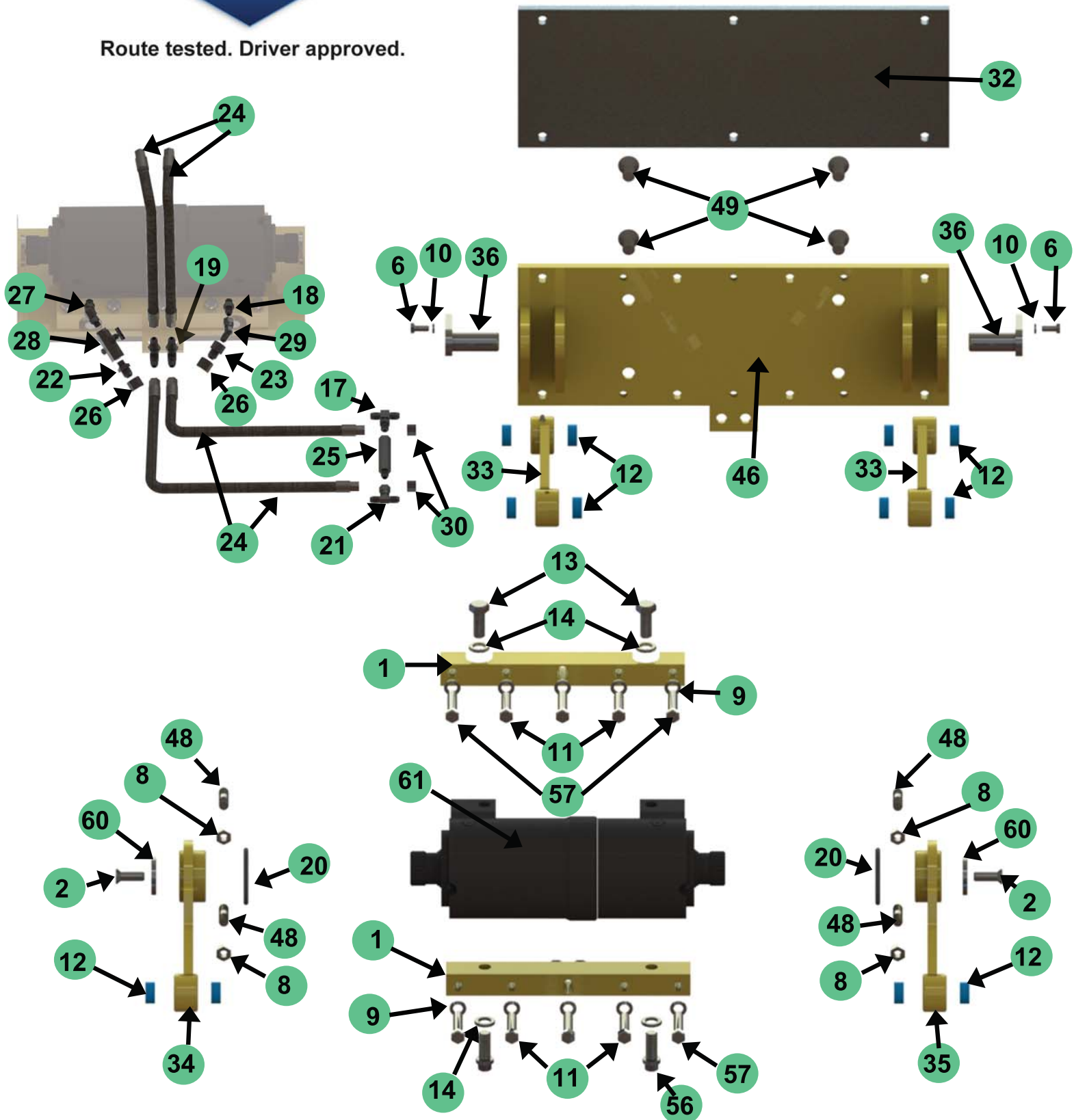


Perkins Manufacturing Company  
Creators of the TuckAway® Cart Lifter  
[www.perkinsmfg.com](http://www.perkinsmfg.com)

800-882-5292

Revised: 8/10/2023  
Page 38 of 44

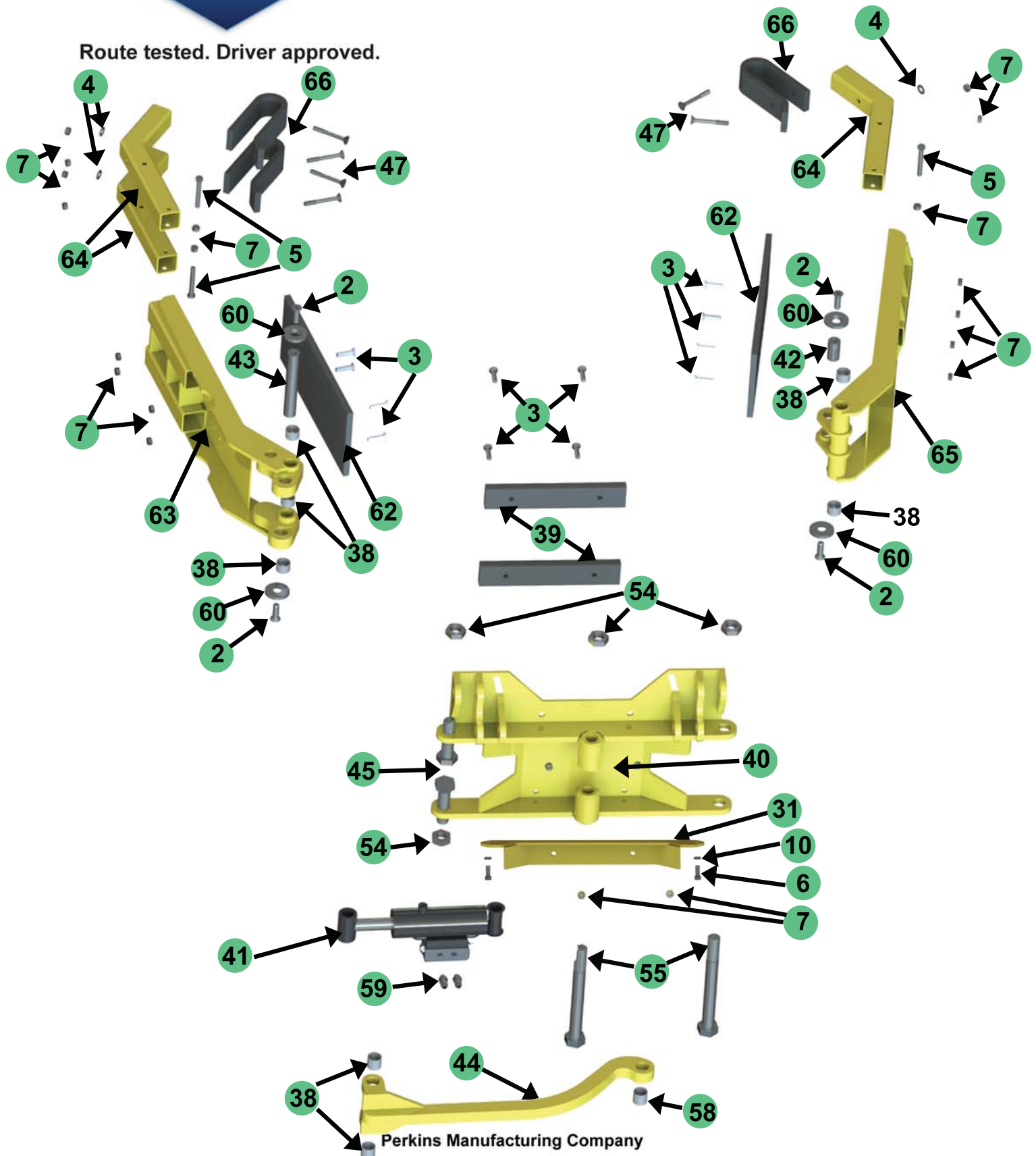
Route tested. Driver approved.



Perkins Manufacturing Company

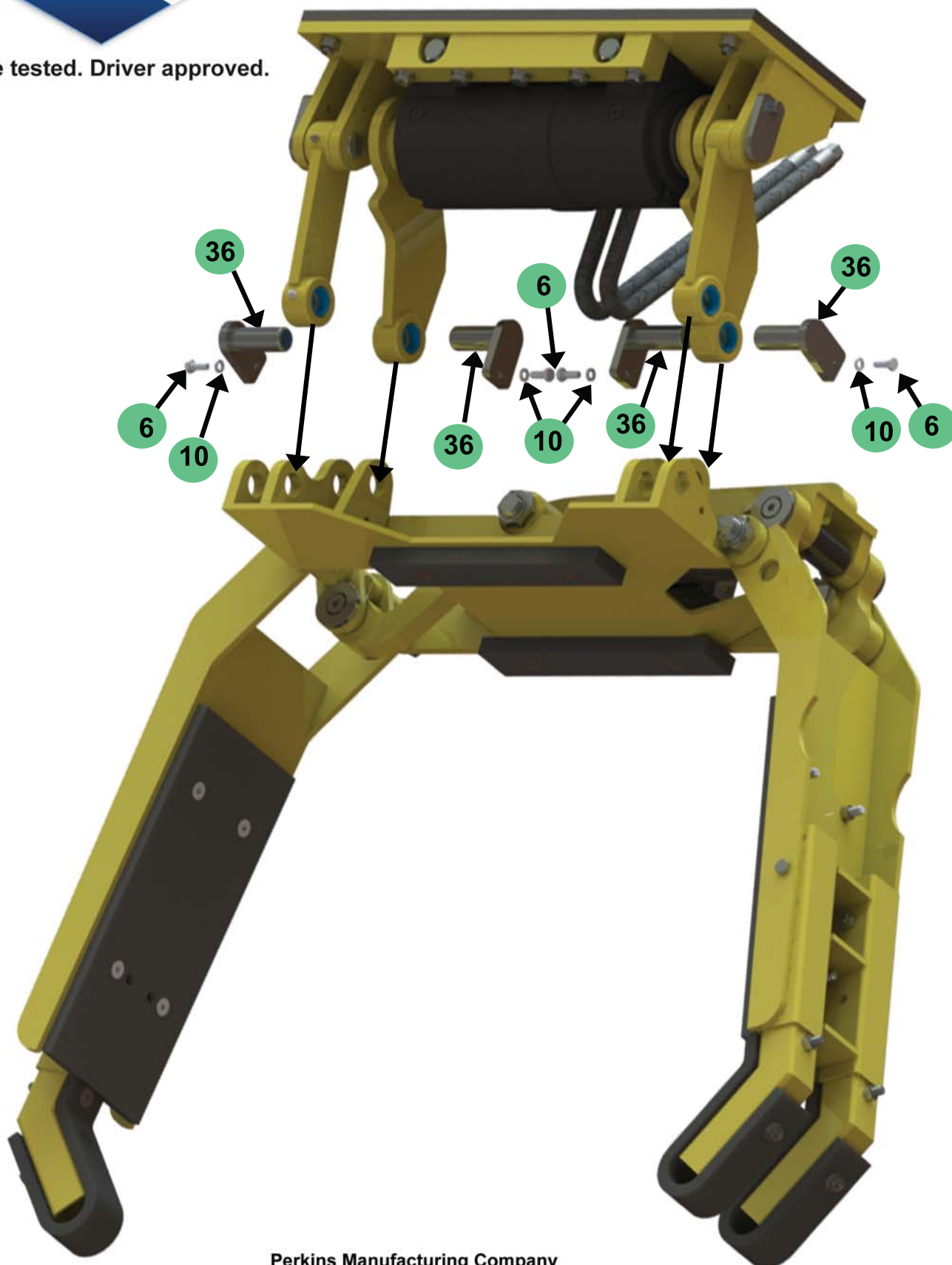


Route tested. Driver approved.



# D6099OA Explode View

Route tested. Driver approved.



**Perkins Manufacturing Company**

737 Oakridge Drive Romeoville, IL 60446

(708) 482-9500 Fax: (708) 354-5878

Email: [tuckaway@perkinsmfg.com](mailto:tuckaway@perkinsmfg.com)

Route tested. Driver approved.

Item	Part#	Description	Qty.
1	D44002	ACTUATOR BAR	2
2	D62006	BOLT FHCS 1/2-13 X 1 1/4	6
3	D62044	BOLT FHCS 3/8-16 X 1 1/4	12
4	D62004	3/8" Flat washer	3
5	D62075	BOLT HHCS 3/8-16 X 2 1/2	3
6	D62079	BOLT HHCS 3/8-16 X 1	8
7	D62080	LOCKNUT 3/8-16	21
8	D62081	LOCKNUT 1/2-13	4
9	D62105	SPLIT LOCKWASHER 1/2"	10
10	D62106	SPLIT LOCKWASHER 3/8"	8
11	D62112	Bolt HHCS 1/2-13 x 2 1/4	4
12	D72108	Fiber glide Bearing	12
13	D62410	BOLT HHCS 5/8-11 X 1 1/2	2
14	D62458	SPLIT LOCKWASHER 5/8"	4
15	D62474*	LABEL-CAUTION	1
16	D63029*	PLASTIC GREASE ZERK CAP	11
17	D63031	TEE 3/8 OREX3/8SAE37DEG	1
18	D63074	ADAPTER #6MT-#6MO	1
19	D63124	BULKHEAD 90 DEG ELBOW 6MT-6MT	2
20	D63238-9	EXTERNAL HUB SEAL	2
21	D63419	TEE #6MT-#6FT-#6MT	1
22	D63430	ADAPTER #8MT-#6MO	1
23	D63431	REDUCER #6FT-#8MT	1
24	D63517	HOSE #6 x 32" LONG	4
25	D63521	VALVE RELIEF AUTO ARM	1
26	D63562	CAP #8 JIC	2
27	D63569	ELBOW 45 #6MO-#6MO	1
28	D63575	VALVE FLOW CONTROL ADJ	1
29	D63581	ELBOW SW 45 #6MT-#6FT	1
30	D63584	CAP #6 JIC	2
31	D69587	Lower Bumper WELDMENT	1
32	D69404	REAR MTG PLATE	1
33	D69405	IDLER ARM WELDMENT	2
34	D69555	DRIVER ARM WELDMENT. LH	1
35	D69556	DRIVER ARM WELDMENT. RH	1
36	D69434	SHORT PINLOCK WELDMENT	6



Route tested. Driver approved.

Item	Part#	Description	Qty.
38	D69565	IGUS plastic bearing 1 x 3/4	8
39	D69567	CENTER RUBBER STRIP	2
40	D69568	NEW FACEPLATE WELDMENT	1
41	D69575	HYDRAULIC CYLINDER	1
42	D69576	SHORT PIN	1
43	D69577	LONG PIN	1
44	D69585	LINKAGE ARM WELDMENT	1
45	D72212	HHCS 1-8 x 3-1/2" LG.	2
46	D69599	MTG PLATE WELDMENT	1
47	D69836	BOLT FHCS 3/8-16 X 3	6
48	D72001	STUD 1/2-13 X 1 3/4	4
49	D72019	BOLT FHCS 5/8-11 X 1 1/4	4
50	D72028*	90 DEG GREASE ZERK 1/4-28	2
51	D72113*	LABEL-NEW PERKINS LOGO	1
52	D72114*	LABEL-ENGLISH CAUTION/GREASE	1
53	D72115*	LABEL-SPANISH CAUTION/GREASE	1
54	D72208	LOCKNUT THIN 1-8	4
55	D72209	HHCS 1-8 X 9	2
56	D72219	12pt Flange Bolt 5/8-11 x 1.5	2
57	D72239	BOLT HHCS 1/2-13 X 2 3/4	6
58	D72240	IGUS BEARING 1X1	1
59	D72242	ADAPTER #4MO-#6MT	2
60	D73008	Actuator Flange	6
61	D73060	27k Helical Actuator	1
62	GC3308	Arm Pad Lg.	2
63	GC3310	Gripper Arm RH	1
64	GC3312	Arm Tip Weld	3
65	GC3315	Gripper Arm LH	1
66	GC3325	Tip Rubber Pad	3
67	Z102*	Grease Zerk Str 1/4-28	7

\*Not Shown



## Troubleshooting

	<b>SYMPTOM</b>	<b>POSSIBLE CAUSES</b>	<b>SOLUTION</b>
<b>A</b>	<b>LIFTER OPERATION IS VERY ERRATIC</b>	<b>AIR COULD BE TRAPPED IN SYSTEM.</b>  <b>FLOW IS TOO LOW</b>  <b>ADJUSTABLE FLOW VALVE IS NOT WORKING PROPERLY</b>	<b>BLEED ALL AIR OUT</b>  <b>INCREASE FLOW FROM DIVERTER VALVE</b>  <b>ADJUST, CLEAN OR REPLACE THE FLOW DIVERTER VALVE.</b>
<b>B</b>	<b>CART LIFTER WILL NOT PICK UP THE WEIGHT</b>	<b>CART IS OVERWEIGHT</b>  <b>HAND VALVE PRESSURE SET TO LOW</b>  <b>TRUCK PRESSURE SET TOO LOW</b>  <b>FAULTY HAND VALVE</b>  <b>ACTUATOR/CYLINDER HAS INTERNAL LEAKAGE</b>	<b>REDUCE WEIGHT OF CART</b>  <b>CHECK AND ADJUST PRESSURE RELIEF ON HAND VALVE</b>  <b>ADJUST TRUCK'S MAIN RELIEF (SEE MANUFACTURER'S INSTRUCTIONS)</b>  <b>REPLACE HAND VALVE</b>  <b>REBUILD ACTUATOR OR RETURN TO PERKINS FOR SERVICE</b>
<b>C</b>	<b>LIFTER OPERATES SLOWLY</b>	<b>FLOW ADJUSTMENT SCREW ON DIVERTER IN TO MUCH</b>  <b>ENGINE IDLE IS TOO LOW</b>  <b>FAULTY HAND VALVE</b>  <b>FAULTY TRUCK PUMP</b>  <b>DEBRIS CLOGGING DIVERTER VALVE</b>	<b>ADJUST SCREW OUT TO INCREASE FLOW</b>  <b>ADJUST ENGINE IDLE</b>  <b>REPLACE HAND VALVE</b>  <b>CHECK TRUCK MANUFACTURER'S INSTRUCTIONS</b>  <b>DISASSEMBLE AND CLEAN DIVERTER</b>



## **Troubleshooting**

	<b>SYMPTOM</b>	<b>POSSIBLE CAUSES</b>	<b>SOLUTION</b>
<b>D</b>	<b>LIFTER OPERATES TOO FAST</b>	<b>ADJUSTMENT SCREW IS OPEN TOO MUCH</b>  <b>ENGINE IDLE TOO HIGH</b>	<b>ADJUST DIVERTER FLOW DOWN</b>  <b>ADJUST ENGINE IDLE DOWN</b>
<b>E</b>	<b>DIVERTER VALVE IS LEAKING OIL</b>	<b>WORN OR DAMAGED SEALS</b>	<b>REPLACE SEAL KIT, PART #D63477</b>
<b>F</b>	<b>HAND VALVE LEVER STICKS IN THE UP OR DOWN POSITION</b>	<b>WORN OR BROKEN SPRING CENTER DEVICE</b>  <b>DEBRIS OR RUST AROUND SPOOL</b>  <b>PRESSURE "IN" &amp; "OUT" HOSES REVERSED</b>	<b>INSTALL NEW SPRING PART #D63192</b>  <b>DISASSEMBLE AND CLEAN SPOOL &amp; HOUSING</b>  <b>REVERSE HOSES TO CORRECT ORDER</b>
<b>G</b>	<b>HAND VALVE IS LEAKING OIL AROUND SPOOL</b>	<b>WORN OR DAMAGED SEALS</b>  <b>WORN SPOOL</b>	<b>INSTALL NEW SEALS PART # D63217</b>  <b>REPLACE HAND VALVE</b>
<b>H</b>	<b>UNABLE TO ACHIEVE 1950 PSI</b>	<b>TRUCK PRESSURE TOO LOW</b>	<b>ADJUST PRESSURE RELIEF OF TRUCK HIGHER</b>  <b>IF IT IS ALREADY AS HIGH AS POSSIBLE, INSTALL A PRESSURE SPEED UP SWITCH</b>
<b>I</b>	<b>UNABLE TO ACHIEVE OVER 1400 PSI</b>	<b>TRUCK PRESSURE TOO LOW</b>	<b>CALL YOUR TRUCK MANUFACTURER</b>





## Troubleshooting

	<b>SYMPTOM</b>	<b>POSSIBLE CAUSES</b>	<b>SOLUTION</b>
<b>J</b>	<b>LIFTER BREAKS BOTTOM BAR OF CARTS</b>	<b>CHECK FOR DAMAGED LIFTER FACEPLATE</b>  <b>CHECK ADJUSTMENT OF LATCH RELEASE ROD/PLUNGER</b>  <b>CHECK PLUNGER SPRINGS AND MOVES FREELY</b>  <b>CHECK MOUNTING HEIGHT OF LIFTER</b>	<b>REPLACE DAMAGED PARTS</b>  <b>ADJUST SO LATCH RELEASES PRIOR TO CART RETURNING TO THE GROUND</b>  <b>GREASE PLUNGER OR REPLACE AS NEEDED</b>  <b>BRAND-NEW LIFTERS THAT BREAK LOWER BARS ARE USUALLY MOUNTED TO LOW. CHECK THE HEIGHT AND REMOUNT ACCORDINGLY</b>
<b>K</b>	<b>LIFTER BREAKS BOTTOM AND/OR TOP BAR OF CART</b>	<b>WARPED FACEPLATE IS STRETCHING THE HOOK SPACING</b>  <b>WARPED LOWER LATCH</b>  <b>LIFTER MAY REQUIRE GREASING/LATCH CONTROL JAMMED</b>	<b>REPLACE DAMAGED PARTS, ENSURING THE HOOK TO HOOK DIMENSION IS 14 3/4 - 15"</b>  <b>REPLACE LATCH</b>  <b>GREASE MOVING LATCH PARTS</b>
<b>L</b>	<b>LIFTER DROPS CARTS</b>	<b>CART COULD HAVE DIMENSIONS INCOMPATIBLE WITH LIFTER</b>  <b>LOWER LATCH FAILS TO LOCK ON LOWER BAR</b>	<b>CHECK THAT THE CART MEETS ANSI SPECIFICATIONS</b>  <b>ADJUST LATCH MAKING SURE IT MOVES FREELY, REPLACE DAMAGED PARTS AND GREASE</b>



## **Troubleshooting**

	<b>SYMPTOM</b>	<b>POSSIBLE CAUSES</b>	<b>SOLUTION</b>
<b>M</b>	<b>LIFTER RETURNS TO GROUND TOO FAST</b>	<b>IN-LINE ADJUSTABLE FLOW CONTROL NOT ADJUSTED</b>  <b>IN-LINE ADJUSTABLE FLOW CONTROL NOT POSITIONED CORRECTLY</b>	<b>ADJUST VALVE IN UNTIL LIFTER'S DOWNWARD MOTION IS DESIRABLE</b>  <b>CHECK THAT IN-LINE ADJUSTABLE FLOW CONTROL IS UNDER LEFTHAND ACTUATOR PORT, SMALL ARROW POINTS AWAY FROM ACTUATOR</b>
<b>N</b>	<b>LIFTER DRIFTS OUT OF POSITON WHEN NOT IN USE</b>	<b>P.O. CHECK VALVE NOT PRESENT</b>  <b>P.O. CHECK VALVE NOT WORKING</b>  <b>INTERNAL LEAKAGE IN HAND VALVE.</b>  <b>INTERNAL LEAKAGE IN ACTUATOR</b>	<b>INSTALL A P.O. CHECK VALVE</b>  <b>CLEAN VALVE CARTRIDGE, RETEST AND REPLACE IF NECESSARY</b>  <b>CLEAN SPOOL AND REPLACE SEAL KIT AS NECESSARY</b>  <b>REBUILD ACTUATOR WITH NEW SEAL KIT</b>
<b>O</b>	<b>THERE IS NO LIFTER DAMAGE AND LATCH ADJUSTMENTS ARE CORRECT, BUT LIFTER STILL BREAKS LOWER BARS OF CARTS.</b>	<b>LIFTER OPERATING FASTER THAN 6 SECONDS</b>  <b>OPERATOR SHAKING CART BACK AND FORTH EXCESSIVELY</b>  <b>OVERLOADED CART</b>	<b>SLOW THE LIFTER BY ADJUSTING THE FLOW DOWN</b>  <b>TRAIN USERS TO LIMIT CART SHAKING TO A MINIMUM</b>  <b>REDUCE CART WEIGHT</b>

## Protective Safety Labeling

Perkins provides each finished cart lifter with ANSI-specified caution labels. They are clearly placed directly on the machine for easy viewing by the operators.

Should the cart lifter ever be re-painted, or if the labels are damaged beyond recognition, it is advised to replace the labels immediately to help keep your crew safe.

OHSA always requires these labels to be in clear sight on the machine.

Responsibility to maintain proper caution and warning labels is the responsibility of the end-user.



You should make sure that all pressure is bled/released from the hydraulic or pneumatic system; for some systems it may be possible to work on a part of the system by using line-breaking or blanking procedures. Never loosen or tighten a hydraulic connection when the system is under pressure. The connection could fail catastrophically and cause an injection injury and/or damage to property. Inspect hoses regularly for wear then replace hoses before leaks can develop. Hydraulics systems should look clean and dry. You can typically see leaks where the machine is collecting dirt and debris that is sticking to the oil. Look for wet-looking areas that are collecting dirt. Check for abraded/scuffed hoses, loose or damaged fittings, or worn out seals, or other physical damage that may have led to creating the leak.





Perkins Manufacturing Company  
Creators of the TuckAway® Cart Lifter  
www.perkinsmfg.com



800-882-5292

Revised: 11/13/20

Page 48 of 50



 	<b>⚠ CAUTION</b>
	<p>Pinch point hazard. Keep hands clear. Worker can be injured by moving parts.</p> <p>Skin injection hazard. Protect your hands &amp; body from high pressure fluids. Relieve pressure before servicing. Do not check for leaks with your bare hands.</p>
<p>Compatible with ANSI Z245.60 type containers only.</p>	
<p>Cycle time must be 3-4 seconds up / 3-4 seconds down. Faster operation can cause damage and injury.</p>	
<p>Perkins Manufacturing, Company 708 482 9500 <span style="float: right;">Label # D72589</span></p>	

 	<b>⚠ ATENCIÓN</b>
	<p>Punta Peligrosa. Mantenga las manos alejadas. El trabajador puede lesionarse moviendo partes.</p> <p>Riesgo de inyección cutánea. Proteja las manos y el cuerpo de líquidos en alta presión. Purgue la presión antes de realizar cualquier servicio. No busque fugas usando sus manos.</p>
<p>Compatible con ANSI Z245.60 solo contenedores de tipo.</p>	
<p>El tiempo del ciclo debe ser 3-4 segundos arriba / 3-4 segundos abajo. Una operación más rápida puede causar daños y lesiones.</p>	
<p>Perkins Manufacturing, Company 708 482 9500 <span style="float: right;">Label # D72590</span></p>	

Dress appropriately for work with pants and sleeves that are not too long or too loose. Shirts should be fitted or tucked in. Avoid wearing loose and dangling jewelry. Tie back long hair and tuck braids and ponytails behind you or into your clothing. Wear the appropriate, well-fitting gloves for your job.

Look for possible pinch points before you start a task. Take the time to plan out your actions and decide on the necessary steps to work safely. Read and follow warning signs posted on equipment.

Machinery can pose a hazard with moving parts, conveyors, rollers, and rotating shafts. NEVER reach into a moving machine. Turn equipment off and use lockout/tagout procedures before adjusting, clearing a jam, repairing, or servicing a machine.





## NOTICE

**Grease all zerks on a weekly basis to maintain warranty.**

**Re-grease after power washing.**

**Visit [www.perkinsmfg.com](http://www.perkinsmfg.com) for important updates.**

**Please read the manual prior to operating or adjusting this machine for important information.**

Perkins Manufacturing. Company 708 482 9500

Label # D72163

Maintaining the lifter is vital to ensure proper operation of the equipment and for warranty to be valid. Inspection of the lifter is also important to make sure there are no loose parts and that the lifter is properly greased. Not inspecting or maintaining the machine regularly can pose a hazard of parts coming loose, parts not moving properly or wear items to become too worn to not move properly. If any issues occur, please contact service immediately.



Perkins Manufacturing Company  
Creators of the TuckAway® Cart Lifter  
[www.perkinsmfg.com](http://www.perkinsmfg.com)

800-882-5292

Revised: 11/13/20

Page **50** of **50**

## Safety Labeling and Training Requirements

Perkins provides safety labeling on all outgoing product per ANSI regulations, seen below.

---

### 19-01 Warning, Label and Safety Instructions.

Include standard safety instructions as one of the first items in a manual. This helps emphasize safe use of the product and can help the user understand the hazards, the consequences of the hazards and how to avoid the hazards. Priority placement also increases the likelihood that the information will be read. Any symbols or pictograms physically on the product should be included in the appropriate section of the manual to reinforce the association between the nature and severity of the hazard and the correct behavior.

The American National Standards Institute (ANSI) standard Z535.6, *Product Safety Information in Product Manuals, Instructions, and Other Collateral Materials*, should also be applied.

To help ensure the product user sees and understands warnings and safety instructions, you should make them conspicuous. It is critical that you make proper use of the signal words "*danger*", "*warning*", "*caution*" and "*notice*" and their corresponding signal colors *red*, *orange*, *yellow*, and *blue*.

Choosing the appropriate signal words and colors are based on an estimate of the likelihood of exposure to the hazardous situation and what could happen as a result of exposure to the hazard. The American National Standards Institute (ANSI) standard Z535.4, *Product Safety Signs and Labels*, defines the hazard signal words as follows:

**DANGER**: Indicates an imminently hazardous situation which, if not avoided, "will" result in death or serious injury. This signal word is to be limited to the most extreme situations.

**WARNING**: Indicates a potentially hazardous situation which, if not avoided, "could" result in death or serious injury.

**CAUTION**: Indicates a potentially hazardous situation, which, if not avoided, "may" result in minor or moderate injury. It may also be used to alert against unsafe practices.

**NOTICE**: Indicates information considered important, but not hazard related (e.g., messages relating to property damage).

***It is the responsibility of owner of this product to maintain the safety labels, keep them clear & visible to all users, and replace the safety labels when they become worn or missing.***

***All users must read and understand this manual and the safety precautions before using this product.***



Perkins Manufacturing Company  
Creators of the TuckAway® Cart Lifter  
[www.perkinsmfg.com](http://www.perkinsmfg.com)

800-882-5292

Revised: 08/08/23  
Addendum



## Manufacturing Company

### Perkins Warranty Procedure

This procedure for claiming warranty must be followed or warranty will not be approved, credit will not be issued, and replacement parts will not be shipped. This document is not a replacement for the warranty policy. Please refer to the last page of your manual, which describes the warranty policy in detail.

If you believe your Perkins lifter has suffered from a failure that could be covered by warranty, immediately lock out any equipment that has failed per OSHA guidelines.

Take photographs of the lifter, including overall views of the unit and some close-ups, as necessary to properly record the failure in a way our engineering staff can examine. While taking photos of the lifter, record the serial number of the lifter.

Call Perkins at (800) 882-5292 and ask to speak to the service department. Requests for warranty can also be emailed to [svaldez@perkinsmfg.com](mailto:svaldez@perkinsmfg.com). Attach any photos to the email, as necessary. The service department will use the photos to determine if the return of parts for inspection is necessary or not. If the return of parts is required, the service department will issue you an RGA number.

Your replacement parts will be shipped at the time of your warranty request, but they will require a purchase order number/payment in order to ship. (Credit will be issued later, after warranty status is determined.) Your replacement parts will feature RGA numbers on the documentation referencing your warranty request. Replacements are sent UPS ground. For faster shipping, the customer will be charged.

Clearly mark the box of any returns with the provided RGA number in a prominent place. This helps our shippers identify your items. When your returned parts arrive, our service and engineering teams will inspect your shipment and determine if the failure is a defect covered by the warranty or not. If the item(s) are covered by warranty, credit will be issued. If the item(s) were not covered by warranty, a report will be generated that fully describes the reasoning behind the decision.

### Common Warranty Mistakes:

Please do not ship lifters/parts to Perkins without first obtaining an RGA number. Parts received without prior authorization or without RGA markings will be discarded and credit will not be issued.

Orders that are placed without discussing warranty status will be treated as a typical order and will be billed accordingly. Credit will not be issued for warranty requests after the order is placed.

No warranty is allowed on lifters/parts not having a serial number.



## Manufacturing Company

### Perkins Return Policy:

If, within 30 days of receipt of the item(s), a customer would like to return an unused item(s), the customer may contact Perkins for a return authorization (RGA#). The item must be shipped within 2 weeks of the return authorization. The customer will pay the return freight and a 15% restocking fee on the return(s). The item must be in new / unused condition, and any damage or clean up required to restore the product to resalable condition will be charged to the customer.

Packages received without an RGA# on the packaging identifying who the product is from may be discarded or refused and credit may not be issued. Always make sure the RGA# is displayed on the box and on any included paperwork.

If Perkins shipped the wrong item(s), the incorrect item(s) may be returned within 30 days of receipt of the item by contacting Perkins for a return authorization (RGA#). The item(s) must be shipped within 2 weeks of the return authorization. Perkins will pay the return freight and waive the restocking fee.

If the return results in a net debit, the customer will be invoiced. If the return results in a net credit, the credit can be used against the replacement item(s) or a future purchase.

### Special Notes:

**Perkins does offer customized solutions and due to the customization of these items, Perkins cannot accept returns or refunds on anything custom ordered. This includes industrial units, cane lifters, and other items which have been specially fabricated to the customer's specifications. Unfortunately returns on these products cannot be accepted.**

## Perkins Manufacturing Two-Year Limited Warranty

PERKINS MANUFACTURING COMPANY warrants its products to be free from defects in material and workmanship under normal use for a period of **two (2) years** from the date of delivery to the first purchaser.

Any claim under this warranty must be handled in accordance with PERKINS' warranty procedure.

This warranty is expressly limited to the repair or replacement in PERKINS' discretion of any component or part of any PERKINS product unit manufactured by PERKINS which is brought to PERKINS attention promptly after discovery and is proven to PERKINS' satisfaction to have been defective in material or workmanship.

This warranty shall not obligate PERKINS to bear the cost of labor or transportation charges in connection with the repair or replacement of defective parts, and it shall not apply to a product upon which repairs, or alterations have been made unless authorized in writing by PERKINS.

Any damage, wear & tear or improper use, substitution of parts not approved by PERKINS, modifications other than those done by PERKINS or as authorized in writing by PERKINS, or any alteration or repair by others in such a manner which, in PERKINS' judgment, materially and adversely affects the product shall void this warranty. Operation at an actuator cycle time of less than six seconds shall void this warranty. Wear items used for anti-friction purposes are not covered by this warranty.

Periodic maintenance is required in order to maintain warranty but is not covered by warranty. Please refer to the maintenance section of the service manual for instructions.

PERKINS makes no warranty of products manufactured by others and supplied by PERKINS, the same being subject to warranties, if any, of their respective manufacturers.

PERKINS shall not assume any liability for any incidental, consequential, direct, or indirect damage, loss or delay of any kind, including, but not limited to, the loss of profits, product or downtime.

PERKINS warrants any service parts it may sell for a period of ninety (90) day from the date of delivery for replacement only. The item being replaced must be returned to PERKINS for evaluation upon its request. The cost of labor to replace such part shall be the responsibility of the owner. PERKINS does not warrant any used parts.

PERKINS, whose policy is one of continuous improvement, reserves the right to improve its products through changes in design or materials as it may deem desirable without obligation to incorporate such changes in products of prior manufacture.

**THE ABOVE WARRANTY SUPERCEDES AND IS IN LIEU OF ALL OTHER EXPRESS OR IMPLIED WARRANTIES INCLUDING, WITHOUT LIMITING, ANY IMPLIED WARRANTIES OF MERCHANTABILITY OR FITNESS FOR A PARTICULAR PURPOSE. NO EMPLOYEE OR ANY OTHER REPRESENTATIVE OF PERKINS IS AUTHORIZED TO CHANGE THIS WARRANTY IN ANY WAY OR TO GRANT ANY OTHER WARRANTY. THESE TERMS WILL BE CONSTRUED ACCORDING TO THE LAWS OF THE STATE OF ILLINOIS WITHOUT REGARD TO ITS CONFLICTS OF LAWS PROVISIONS. ALL ACTIONS OR PROCEEDINGS IN ANY WAY, MANNER OR RESPECT ARISING OUT OF OR RELATED TO THE GOODS WILL BE LITIGATED ONLY IN STATE OR FEDERAL COURTS, AS APPROPRIATE, LOCATED IN WILL COUNTY, ILLINOIS. BUYER CONSENTS AND SUBMITS TO JURISDICTION IN THE STATE OF ILLINOIS AND WAIVES ANY RIGHT TO TRANSFER THE VENUE OF ANY SUCH ACTION OR PROCEEDING.**